

3.5M Toilet Trailer

Specification

Dimensions:	350*210*280cm
Color:	White
Electrical:	220V/50HZ
Weight:	1,200K
Material:	Frame: Galvanized steel Exterior wall: Fiberglass honeycomb panels Interior wall: ACM, wood finish Floor: Marble SPC floor
Accessory:	Trailer hitch ball Trailer coupler Independent trailer suspension 14inch tire Fold-out Handrail Slide-out trailer stair Heavy-duty trailer jack with wheel Heavy-duty trailer stabilizers 7 Pin trailer connector Entry door
Electrical System:	Electrical panel board Circuit breaker Standard power sockets generator receptacles
Lighting:	Interior lights Trailer tail lights Trailer side lights Red reflectors Toilet occupied indicator lights Mirror light
Water Supply System:	500L clean water tank 1,000L holding tank Water pumps Water heater Water pressure tank

Water Sink:	Stainless steel sinks Faucets
Equipment:	Mirrors Porcelain toilets Stainless steel urinals Exhaust fans Trash cans Stainless steel cabinets Wall-mounted soap dispensers wall mounted tissue box Toilet paper holder
Warranty:	1 year warranty for free
<p>For more information on this model, such as size options, pricing, standard configurations, customization and upgrades, production time, delivery terms, etc., please email sales@etofoodcarts.com. Our sales agent will contact you within a day or even sooner to address any inquiries you may have.</p>	

etodevice

Details



- Front -



- Side -



- Side -



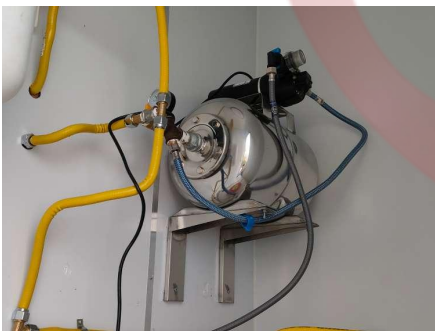
- Tail Lights -



- Equipment Room -



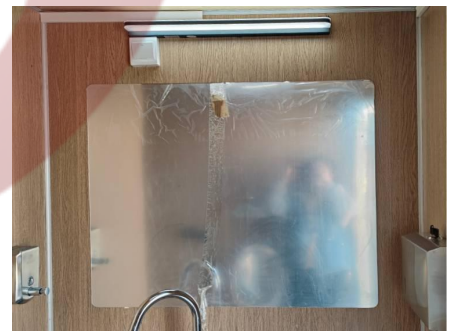
- Holding Tank Outlet -



- Water Pressure Tank & Pump -



- Clean Water Tank -



- Mirror -



- Sink -

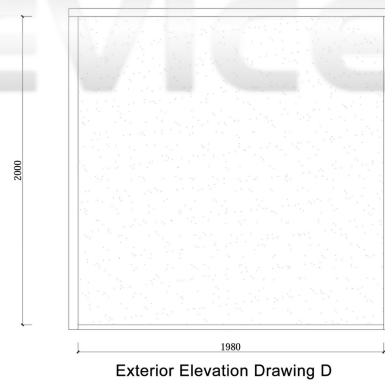
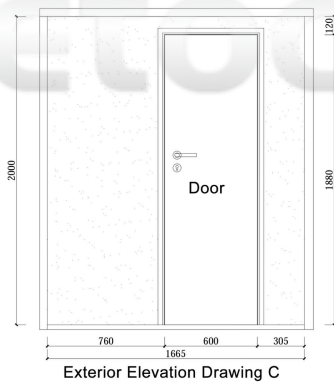
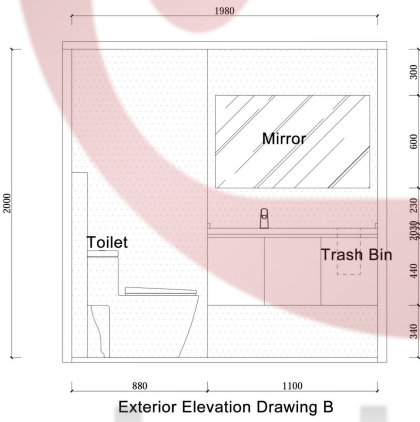
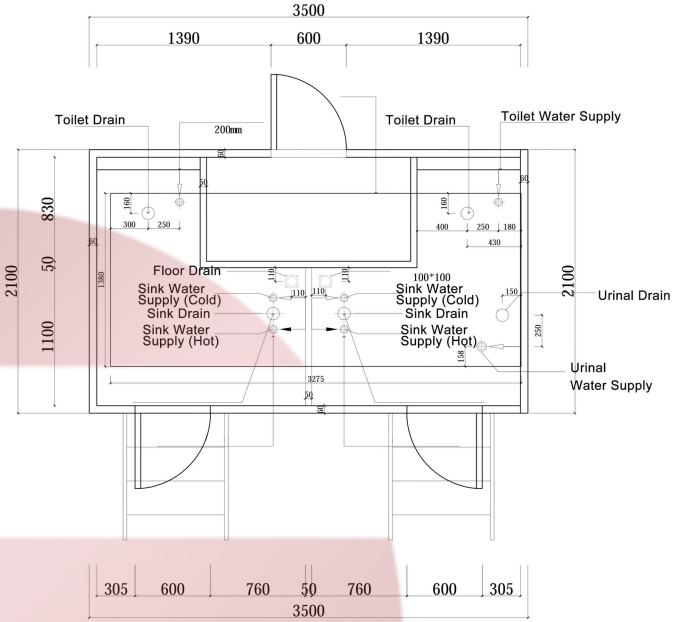
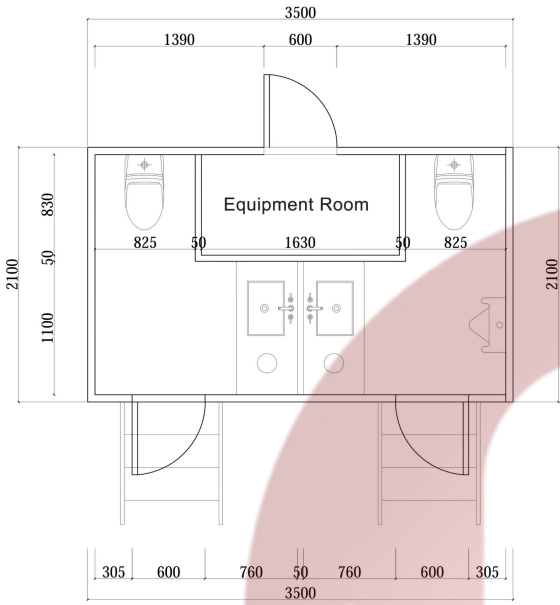


- Urinal -

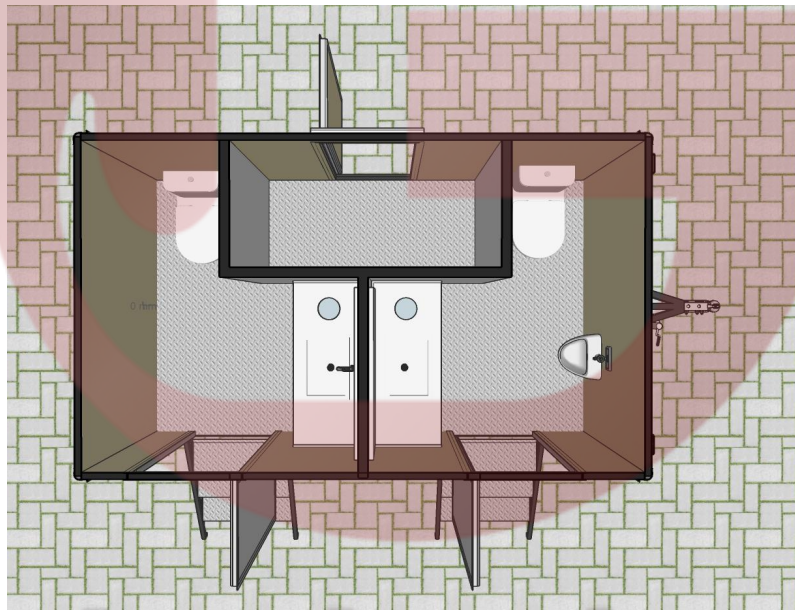
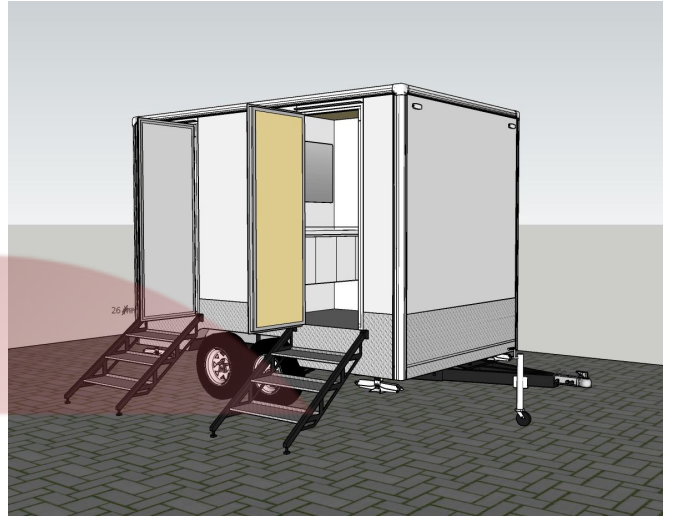
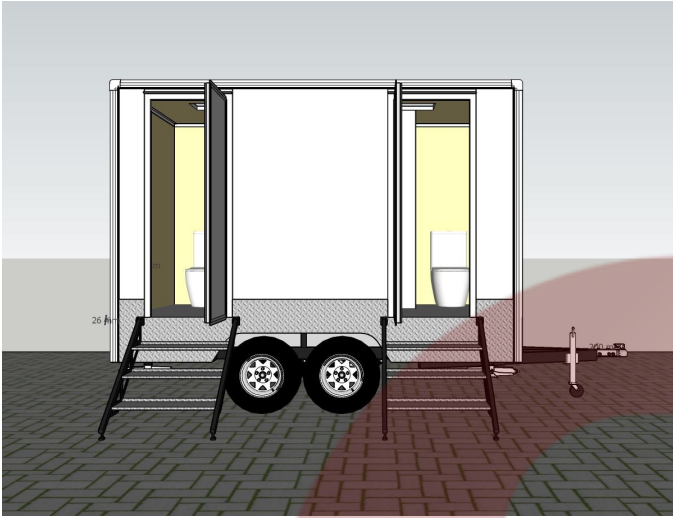


- Toilet -

Floor Plan



Design



etodevice